

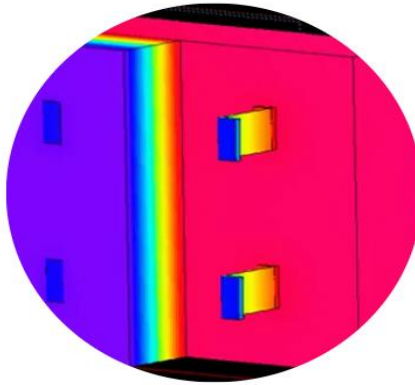


Koa Clip™ increases thermal performance by significantly reducing thermal bridging. Koa Clip™ is intermittently placed on a building's substrate and its thermal spacer pad limits cold transfer from the finished exterior cladding to the building's interior. This greatly improves R-Value and the energy efficiency of the building. Optionally, a second spacer pad may be snapped onto the other side of the Z-standoff component completely isolating the steel, this increases effective performance.



Strong

Koa Clip™ can be fastened to steel stud or concrete wall substrates. It is composed of a steel Z shaped component connectable to a high impact polypropylene spacer pad which is intermittently placed to structural specifications to carry the weight of the architectural cladding. It is versatile with being able to receive horizontal or vertical sub girts accommodating any type of architectural finished product. Comprehensive load tables and structural capacity charts have been generated. These engineering reports were based on 3 loading conditions to account for different cladding weights (5,10,15 lbs / SF). Also calculated data for 4 vertical and 4 horizontal spacing conditions are reported confirming capabilities on concrete and metal stud backup walls.



Efficient

Koa Clip™'s integral thermal separation pad acts as an isolator significantly decreasing thermal bridging and reducing heat loss within the building's envelope. Optionally, a second thermal spacer pad may be snapped onto the other side of the Z-standoff component completely isolating the steel and limiting cold transfer, this increases effective performance. Backed by an extensive thermal modeling evaluation which confirms compliance by meeting the requirements of ASHRAE 90.1-2016



Effective


Koa Clip™ is available in various sizes, the depth of the wall clip can vary to accommodate different thicknesses of insulation in a rain screen wall system. Certification was issued by Intertek with meeting the specified fire performance™ requirements of NFPA 285-23. Koa Clip's robustness yields greater spacings so less clips required and the ease of installation feedback from customers is commendable. Speedy install, meets building code requirements, structurally sound, versatile allowing for any cladding type, and cost effective. Why not consider Koa Clip for your thermally broken cladding attachment system in the construction of your next wall assembly.








KOA CLIP
Thermal Wall Bracket


info@koaclick.com




 Sizes from 2" - 6.5" (8" coming soon)

 Universal, being suitable for attachment to any substrate


 Versatile, by supporting any type of cladding / architectural product



 Allows for vertical or horizontal girt attachment and any kind of rail system


 Designed with option to add a second thermal separator, increasing R-value

 Energy efficient  Fast / Very easy to install  Reasonable cost

 Built in leg helps in retaining insulation by holding it in place and tight to wall.


 Meets requirements of ASHRAE 90.1-2016

 Successfully has passed fire testing criteria for NFPA 285 and proudly holds listing with Intertek 

 Accommodates adjustability "IF necessary" by receiving an "L" angle vertically. Note, typically most substrate misalignment can be corrected with shims in the rail or panel system. Many other thermal clips on the market can only receive this labour-intensive approach of always having to adjust and make the entire wall true by fixing an "L" angle

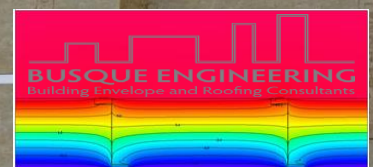
 STRONG

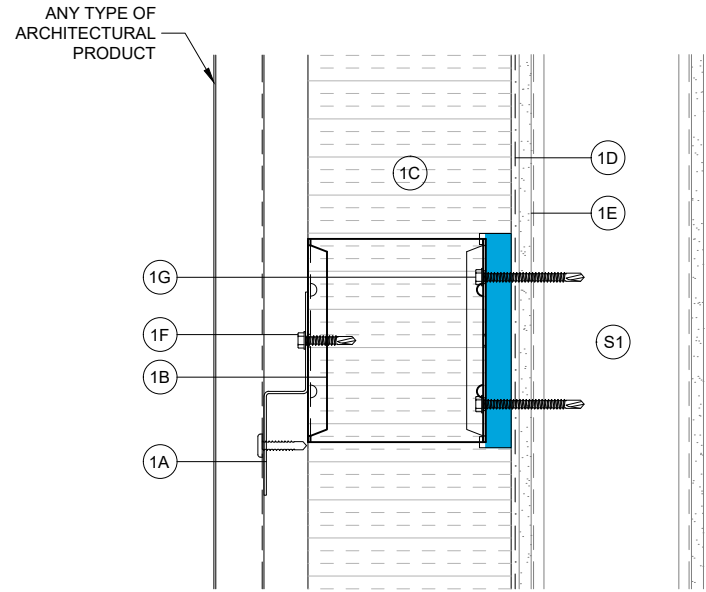
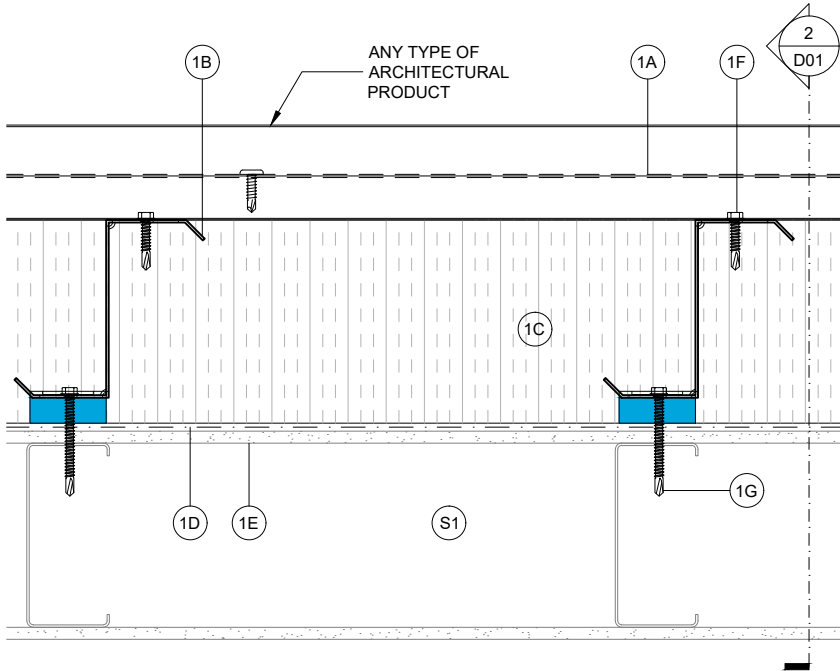
 EFFICIENT

 EFFECTIVE

intertek
Total Quality. Assured.

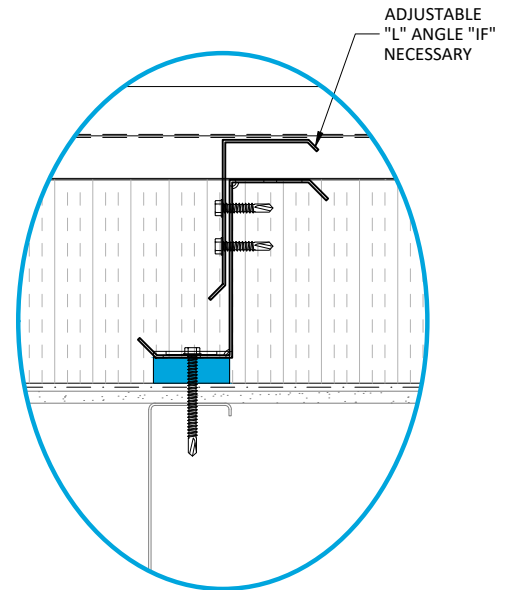
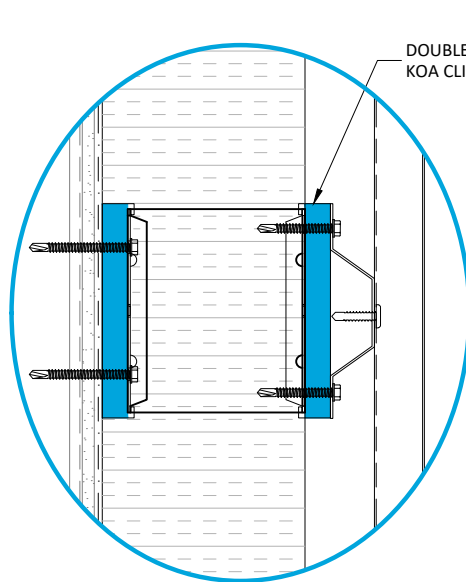
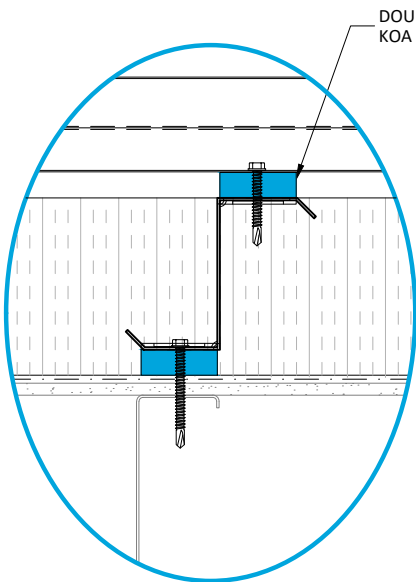
KOA





1 SINGLE PAD KOA CLIP ATTACHMENT IN FULL WALL ASSEMBLY
D01

2 SINGLE PAD KOA CLIP ATTACHMENT IN FULL WALL ASSEMBLY
D01

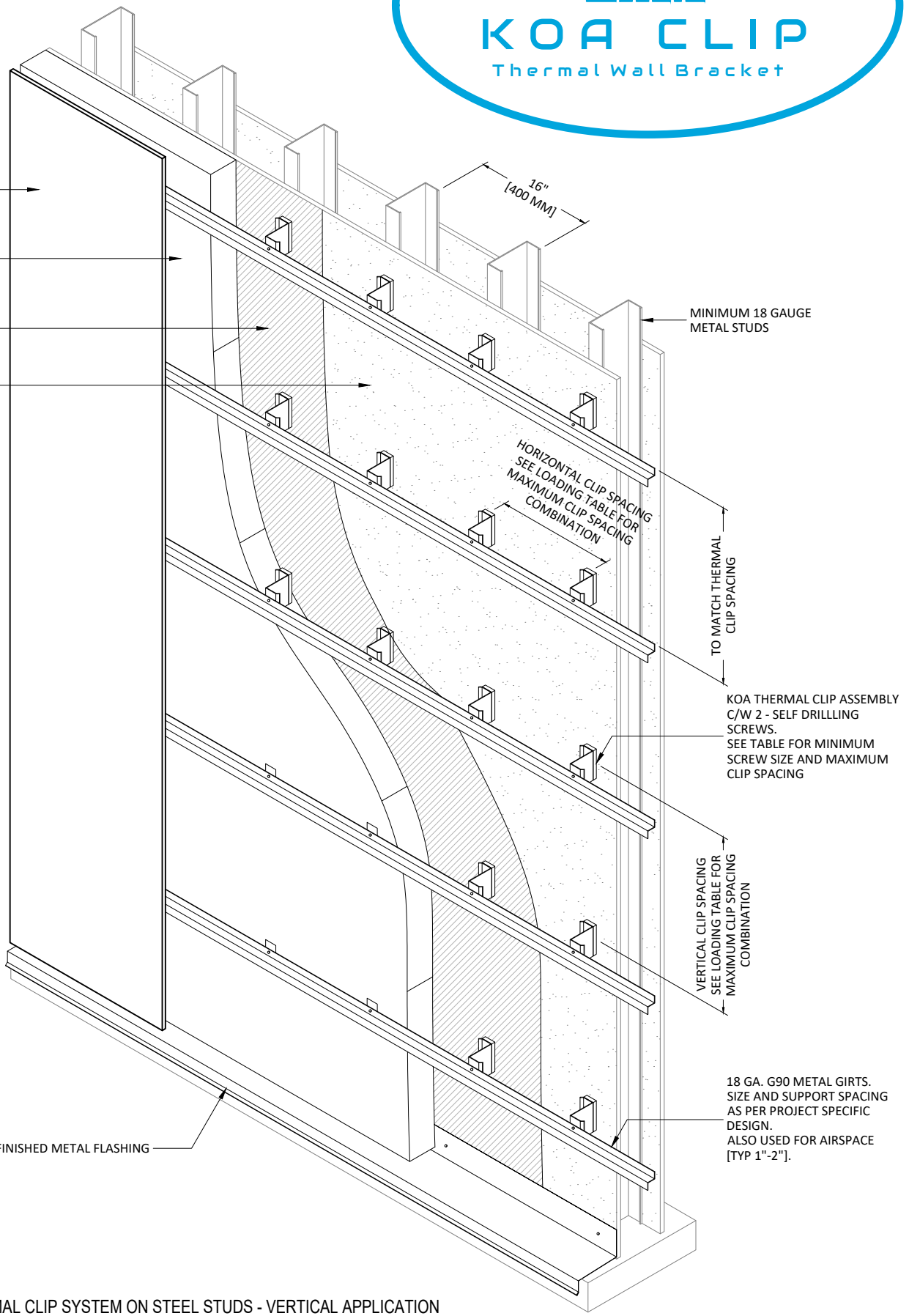


3 DOUBLE PAD KOA CLIP ATTACHMENT
D01

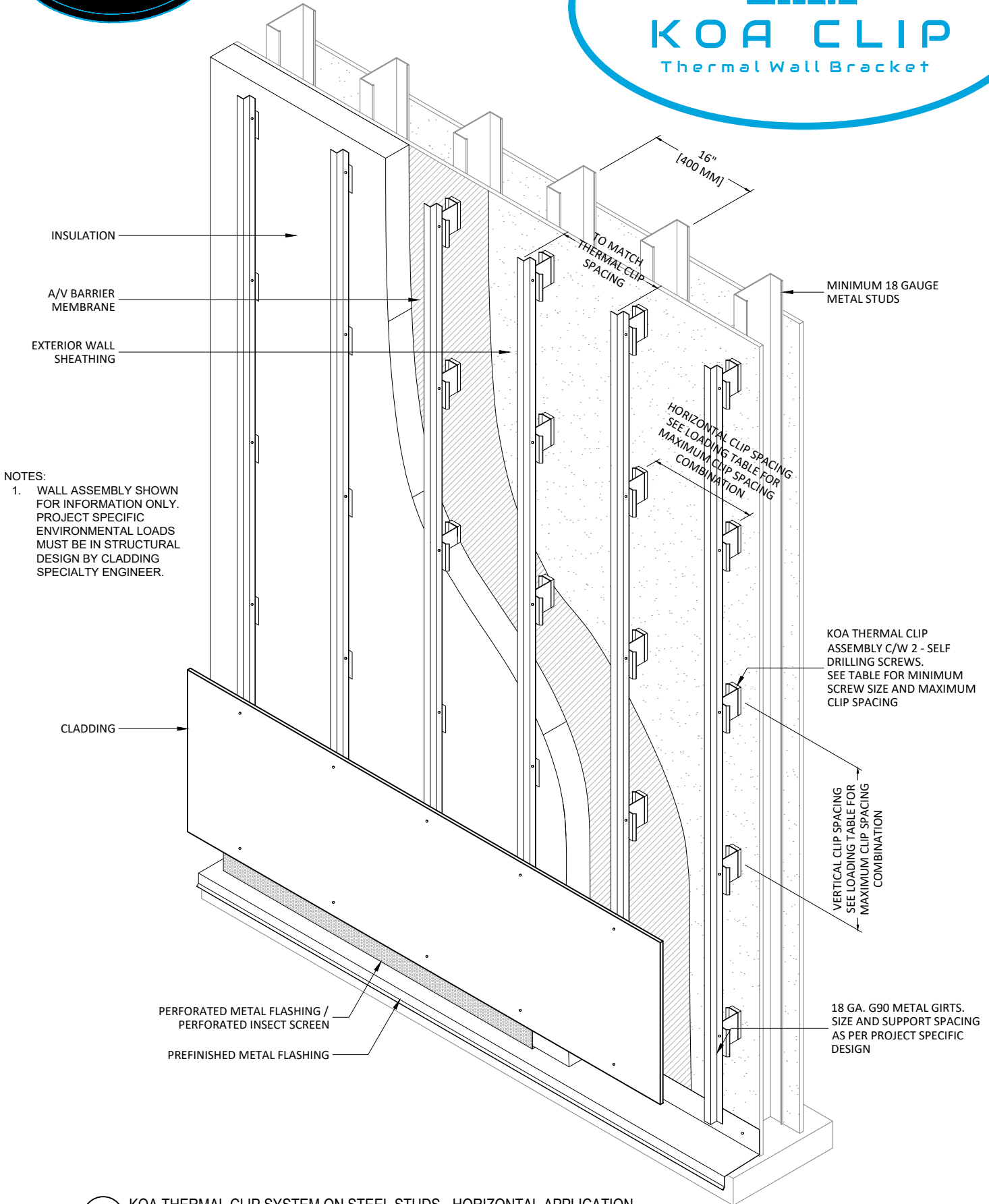
4 DOUBLE PAD KOA CLIP ATTACHMENT
D01

5 L ANGLE SUPPORT OPTION
D01

LEGEND:	
1A	HORIZ. OR VERTI. SUBGIRT - TYPICAL 1" GIRT (AIR SPACE & PANEL ATTACHMENT)
1B	SINGLE PAD KOA CLIP (THERMAL WALL BRACKET) DOUBLE PAD OPTION ALSO AVAILABLE
1C	INSULATION
1D	AIR / VAPOUR BARRIER MEMBRANE
1E	EXTERIOR SHEATHING
1F	SUBGIRT FASTENERS
1G	2 - 14-14 x 2" HWH MASTER DRILLER OR 2 - 14-14 x 2-1/2" CONCRETE PIN
S1	SUBSTRATE, STEEL STUDS OR CONCRETE



NOTE:
1. ON HORIZONTAL CLADDING APPLICATION, METAL GIRTS TO BE INSTALLED VERTICALLY.
2. WALL ASSEMBLY SHOWN FOR INFORMATION ONLY. PROJECT SPECIFIC ENVIRONMENTAL LOADS MUST BE IN STRUCTURAL DESIGN BY CLADDING SPECIALTY ENGINEER.

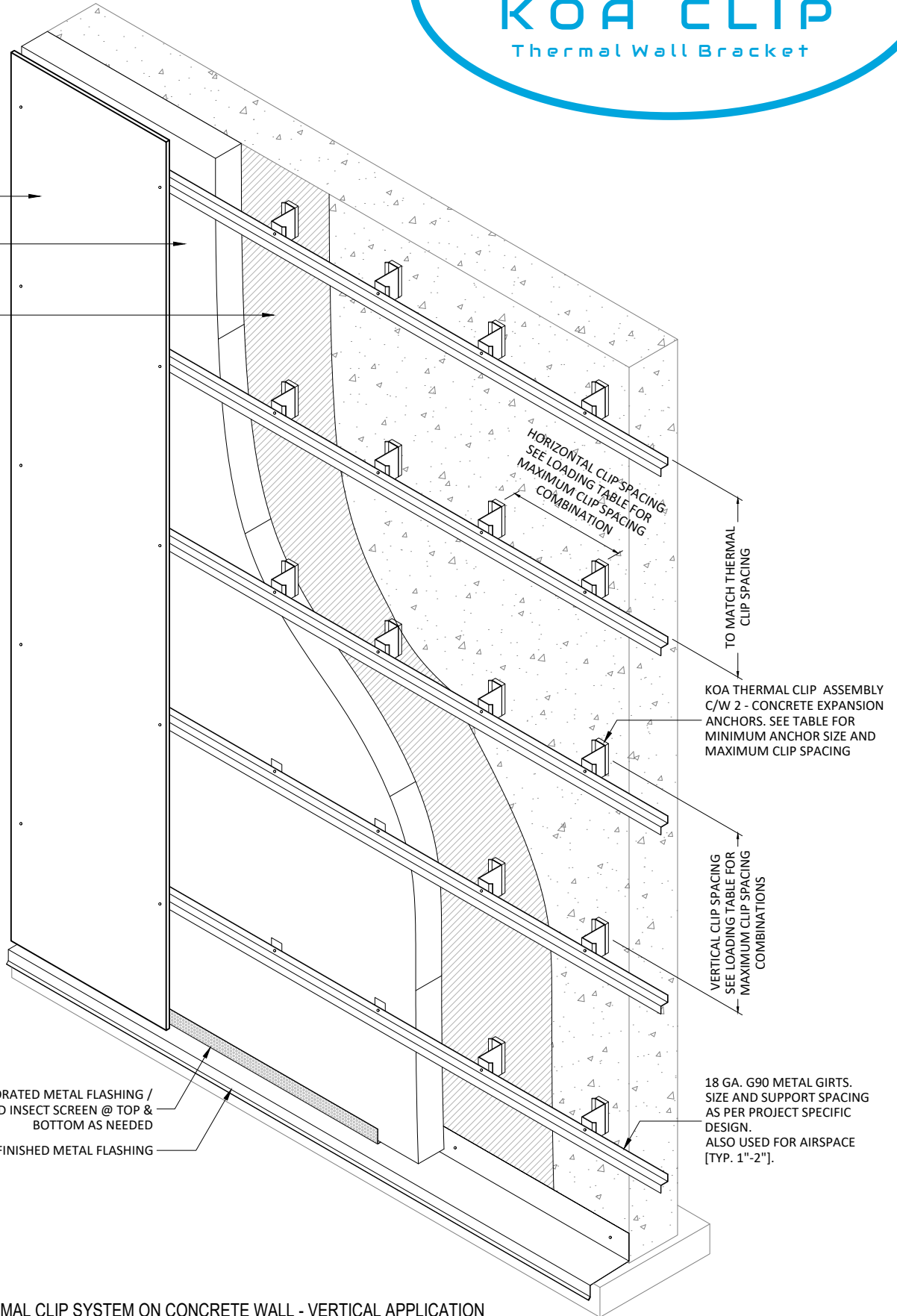


NOTES:
1. WALL ASSEMBLY SHOWN FOR INFORMATION ONLY. PROJECT SPECIFIC ENVIRONMENTAL LOADS MUST BE IN STRUCTURAL DESIGN BY CLADDING SPECIALTY ENGINEER.

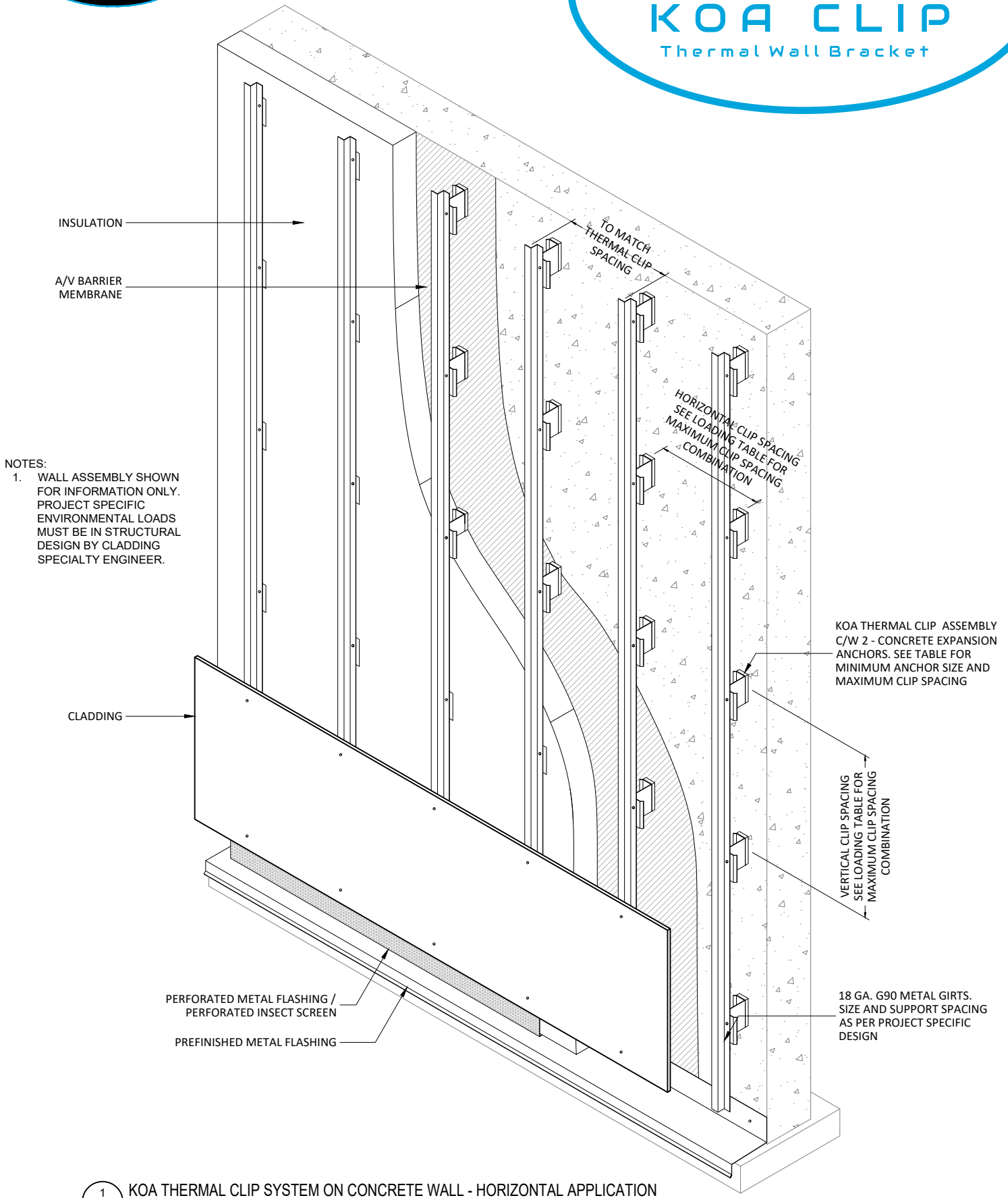


CLADDING
 INSULATION
 A/V BARRIER
 MEMBRANE

- NOTE:
1. ON HORIZONTAL CLADDING APPLICATION, METAL GIRTS TO BE INSTALLED VERTICALLY.
 2. WALL ASSEMBLY SHOWN FOR INFORMATION ONLY. PROJECT SPECIFIC ENVIRONMENTAL LOADS MUST BE IN STRUCTURAL DESIGN BY CLADDING SPECIALTY ENGINEER.



1 KOA THERMAL CLIP SYSTEM ON CONCRETE WALL - VERTICAL APPLICATION
 C02



NOTES:
 1. WALL ASSEMBLY SHOWN FOR INFORMATION ONLY. PROJECT SPECIFIC ENVIRONMENTAL LOADS MUST BE IN STRUCTURAL DESIGN BY CLADDING SPECIALTY ENGINEER.